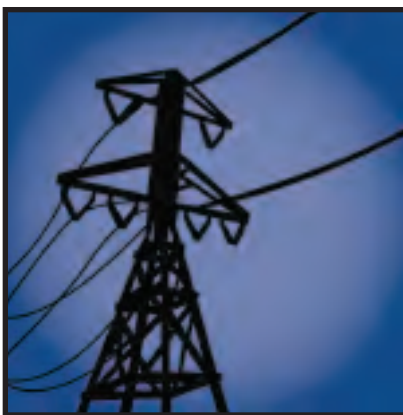


# THE THREE PARTS OF ELECTRICITY SERVICE AND YOU

Your electric bill contains three separate charges for the three parts of your electricity service — **generation, transmission and distribution**. Because the District of Columbia's electricity market is open to competition, you have the ability to choose who supplies the **generation service portion** of your service — this is called **customer choice**. Like buying any other product, it's important to be informed about what you are purchasing — the same goes for buying electricity.



Example of a power plant.



Example of a high-voltage transmission line.



Example of a local distribution system.

**Generation** is the production of electricity at a power plant. Like any other product you buy, electricity must be made. In the District of Columbia, electricity suppliers who produce electricity may compete for your business. **You can choose who generates your electricity. There are currently a limited number of suppliers, but more choices may become available in the future.**

**Transmission** is the movement of large amounts of electricity from where it's produced to where it's distributed. Similar to food or clothing, electricity is made in large quantities and must be shipped. While other consumer products travel by rail or trucks to distribution centers, electricity travels over high-voltage transmission lines to local distribution systems.

**Distribution** is the delivery of electricity to your home through a local distribution system. Electric utility companies distribute electricity to homes through power lines, transformers, substations and other equipment. In the District of Columbia, Pepco is the sole distributor of electricity and prices are set by the Public Service Commission.

The "D.C. is Electric" campaign can provide you with more information about the electricity generation supply choices available to you. To learn more, visit [www.DCisElectric.com](http://www.DCisElectric.com) or call 202-895-0950.